

## Consolidation-Point Boxes for DIGITUS® Keystone Modules



✓ For all DIGITUS® Keystone Modules

✓ 2-port- or 6-port version

✓ Easy installation

✓ Material: ABS

### Abstract

Consolidation-Point Boxes for DIGITUS® Keystone Modules, 2-port or 6-port

### Features

- Capacity of DIGITUS® Keystone Modules when feeding the cables from the back: max.6 modules; when feeding the cables from the bottom or the sides: max. 12 modules
- Suitable for all DIGITUS® Keystone Modules
- Available as 2-port or 6-port version
- Lower housing shell with an opening for cable entry and mounting holes for wall mounting
- Consisting of: 1x housing shell top, 1x housing shell bottom, 2x adapter plates with 6x (DN-93705) or 2x (AT-AG 302A-WH) Keystone openings, 1x adapter plate for cable entry
- Color: Pure white
- Material: ABS
- Dimensions (HxWxD): 40x170x120 mm (DN-93705); 30x50x50 mm (AT-AG 302A-WH)
- Weights: ca. 170 g (DN-93705); ca. 30 g (AT-AG 302A-WH)
- Temperature range: -10 °C up to +50 °C

### Product Overview

The box is a part of the DIGITUS® modular connection system and is used for installation of consolidation points at desks, in intermediate ceilings or in underfloor systems.

The housing is suitable for DIGITUS® Keystone Modules.

### Product Number Information

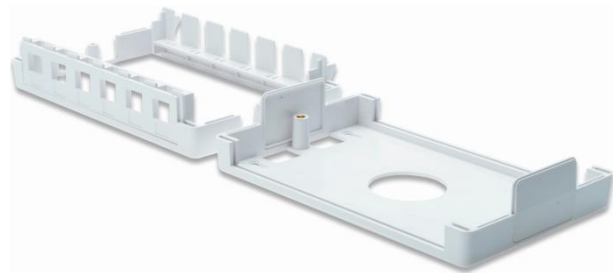
AT-AG 302A-WH	Consolidation-Point Box for 2x Keystone Module, color RAL 9010, 2-port
DN-93705	Consolidation-Point Box for 6x Keystone Module, color RAL 9010, 6-port

**Product Images**

**AT-AG 302A-WH**

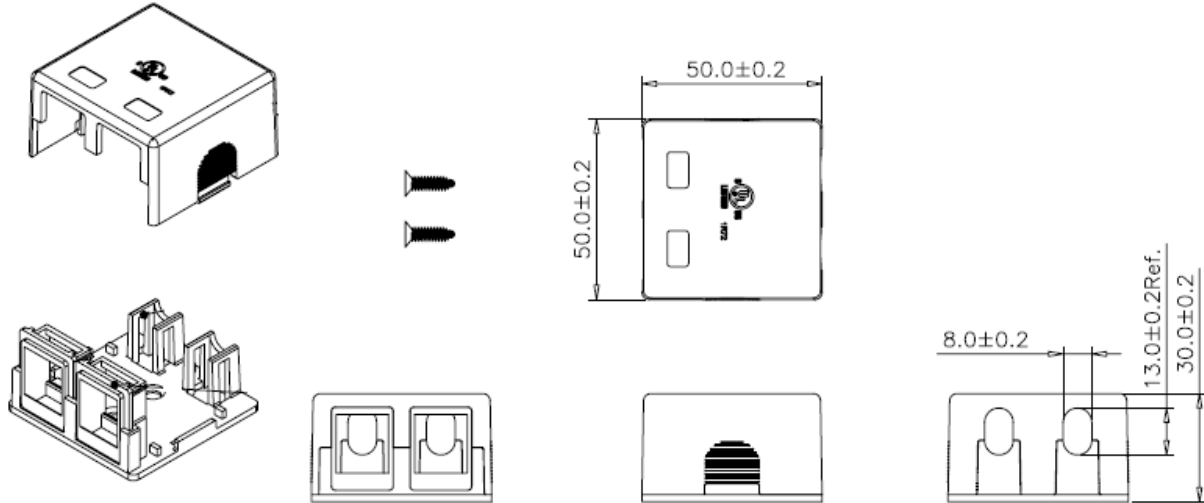


**DN-93705**



## Technical Drawings

### AT-AG 302A-WH



### DN-93705

