

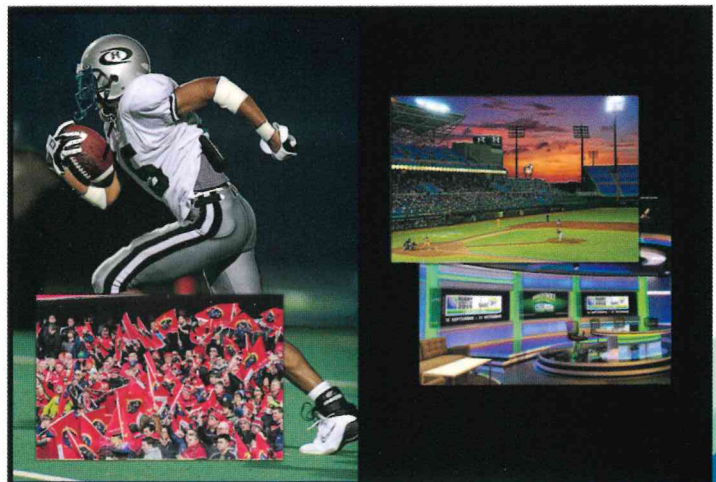
# SD-MV-CM61

## Multiviewers

### DESCRIPTION

The SD-MV-CM61 multiviewer is designed to display multi video inputs onto one display. It features 4 HDMI2.0 and 2 DP1.2 video inputs supporting up to 4K@60 and one HDMI2.0 output with resolution up to 4K@60 as well.

It also provides 6-line inputs, 1 SPDIF output and 1 analog output for audio processing. It is extremely flexible and fast switching capable multiviewer making it perfect for applications such as broadcasting, security, boardroom, TV studio and so on.



### Key Features

- 4 HDMI2.0 inputs, 2 DP 1.2 inputs
- 1 HDMI2.0 output.
- Supports 4K@60Hz 4:4:4
- Supports quad view
- Supports HDCP 2.2
- Supports up/down scaling
- Supports video cropping
- Supports 6 embedded audio inputs
- Supports 6 analog audio inputs
- Supports audio embedding
- Supports audio de-embedding
- Supports Auto-switching
- Supports up to 16 pre-defined layouts
- Supports up to 16 custom layouts
- Multiple control methods, including a front panel, web GUI and RS232 port.

### SPECIFICATIONS

DIMENSION (W X H X D)	440MM x 272MM x 43.5MM
NET WEIGHT	3.16KG
VIDEO INPUT	4 x HDMI (2.0), 2 x DISPLAY PORT (1.2)
HDMI INPUT RESOLUTION	UP TO 3840x2160 @60HZ
VIDEO OUTPUT	1 x HDMI
HDMI OUTPUT RESOLUTION	UPT TO 4K@60Hz RGB
HDCP VERSION	UP TO HDCP 2.2
AUDIO IN	6 x 3.5MM STEREO JACK, 4 x HDMI (EMBEDDED), 2 x DP (EMBEDDED)
AUDIO OUT	1 x 3.5MM MINI JACK, 1 x OPTICAL FIBER TERMINAL, 1 x HDMI (EMBEDDED)
CONTROLS	1 x RS232, 1 x RJ45, FRONT PANEL, OPERATION GUI
POWER SUPPLY INPUT VOLTAGE	INPUT AC 100~240V, 50/60Hz
POWER CONSUMPTION	13W
OPERATING TEMPERATURE RANGE	0~40 DEGREE CENTIGRADE
OPERATING HUMIDITY RANGE	10%~90% NON-CONDENSING

