

ednet.

Wireless Notebook Mouse 2.4GHz



Quick Installation Guide 81166

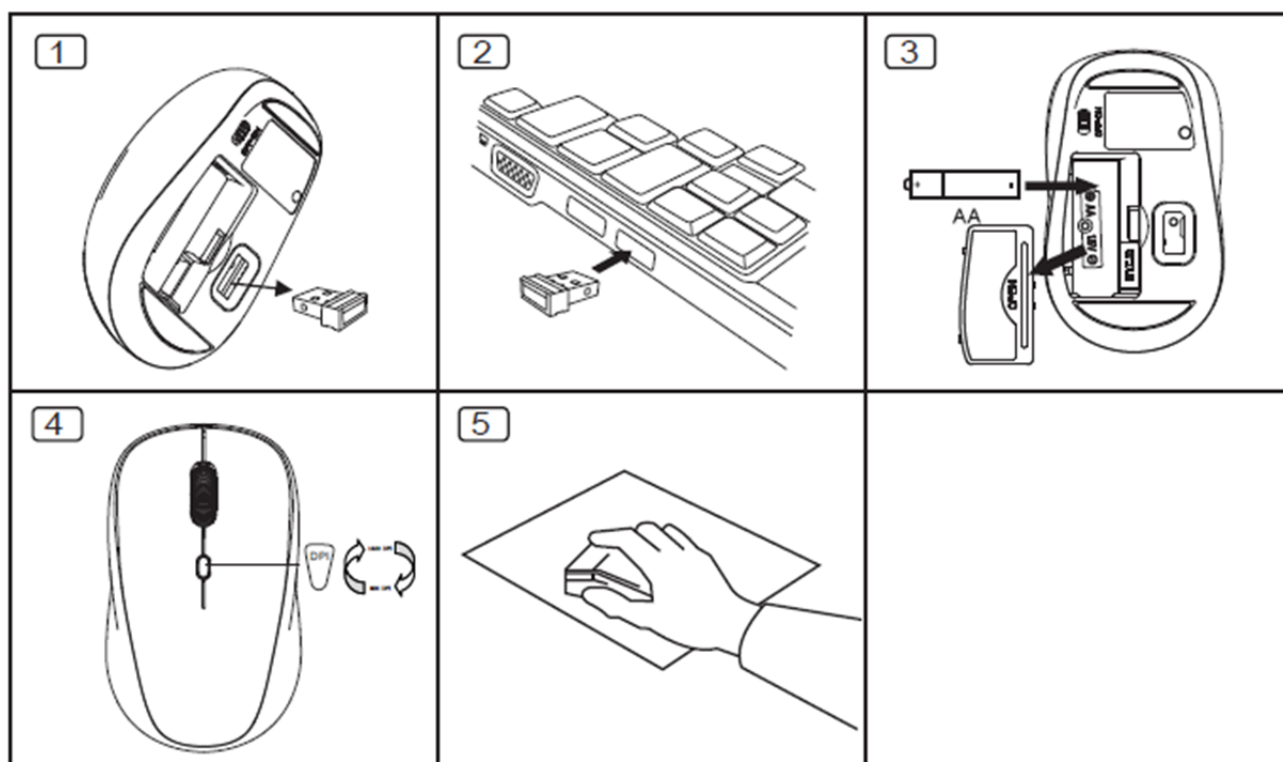
The wireless notebook mouse is reliable and particularly designed for use with notebook. The optical mouse with 2.4 GHz nano USB receiver offers, with its range of up to 10 m, maximum flexibility. The ergonomic design offers best comfort and makes the mouse suitable for both left and right handers. The ednet wireless mouse allows, thanks to its features and functions, accurate control of notebook or PC. The fast scroll wheel is perfectly suitable for fast navigation. With its adjustable sensitivity settings (800, 1200, 1600 DPI), the mouse can be adjusted to your individual needs. The energy saving mode helps to conserve battery power.

Specification

- Maximum Wireless working distance is 10 meters
- 2.4GHz mouse: Radio Frequency/32channels hopping with 2 group from 2.405~2.476GHz
- Resolution: 800/1200/1600DPI switchable
- Receiver: nano receiver
- Wheel: 1 mechanical scrolling wheel
- Power Consumption: DC=1.5V, 19mA
- Automatic power-saving mode.
- Frequency band(s): 2400-2483.5MHz
- Operating frequency(s):
2404MHz-2478MHz for USB dongle and 2404MHz-2478MHz for Mouse Part
- Transmit power: -1.46 dBm for Mouse, -2.12 dBm for dongle

Installation

1. Take out nano receiver
2. Connect nano receiver to PC, until the automatic installation is completed.
3. Open the battery cover on bottom and insert battery.
4. Finish above steps, click left or right button, then you can start to use it.



Caution: Below factors may cause the wireless performance

- Please do not use any metal object to be close the nano receiver.
- If some other wireless devices closing Nano receiver, please remove it and reconnect nano receiver to get different communication ID.
- When the battery is out of energy, please change a new battery.
- Please do not use mouse on very shiny surface or transparent surface.
- Please do not put Nano receiver next to Bluetooth dongle
- Never recharge the Non-Rechargeable Batteries and never throw them into fire.
- Please observe local regulations for disposing of batteries.



Hereby Assmann Electronic GmbH, declares that the Declaration of Conformity is part of the shipping content. If the Declaration of Conformity is missing, you can request it by post under the below mentioned manufacturer address.



Unit 10, 2M Trade Park
Beddow Way
Aylesford
Kent. ME20 7BT
Tel: 01622 716688
Email: sales@fairline.co.uk
Web: www.fairline.co.uk

