

## DIGITUS<sup>®</sup> CAT 6<sub>A</sub>, High Density Patch Panel, shielded



✓ Category: 6<sub>A</sub>

✓ High Density (only 0.5U)

✓ Shielded

✓ With dust protection shutters

### Abstract

DIGITUS<sup>®</sup> CAT 6<sub>A</sub>, Class E<sub>A</sub> High Density Patch Panel, shielded, 0.5U, 24-port, color black (RAL 9005)

### Features

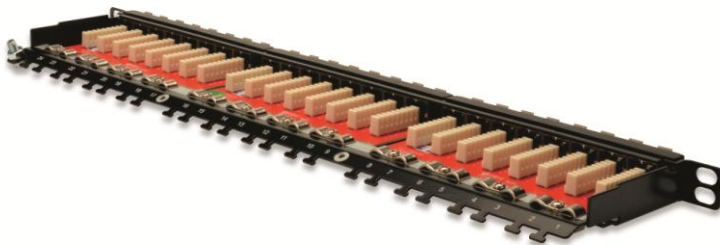
- CAT 6<sub>A</sub> Class E<sub>A</sub> for up to 500 MHz
- Hight Unit: Only 0.5 U
- Suitable for 10 Gbit Ethernet
- Shielded RJ45 jacks, 8P8C
- Material housing: SECC, 1.5 mm galvanized, cold-rolled Steel acc. EN1.4301, UNS S30400, AISI 304 and LMSAD110
- 360° shield coverage
- Integrated dust protection caps
- Cable installation via LSA strips, color coded acc. EIA/TIA 568 A & B
- Fixing option for cable ties, central ground connection
- Suitable for 483 mm (19") rack mount
- Complies with the 802.3at PoE+ and the 802.3af PoE standard

### Product Overview

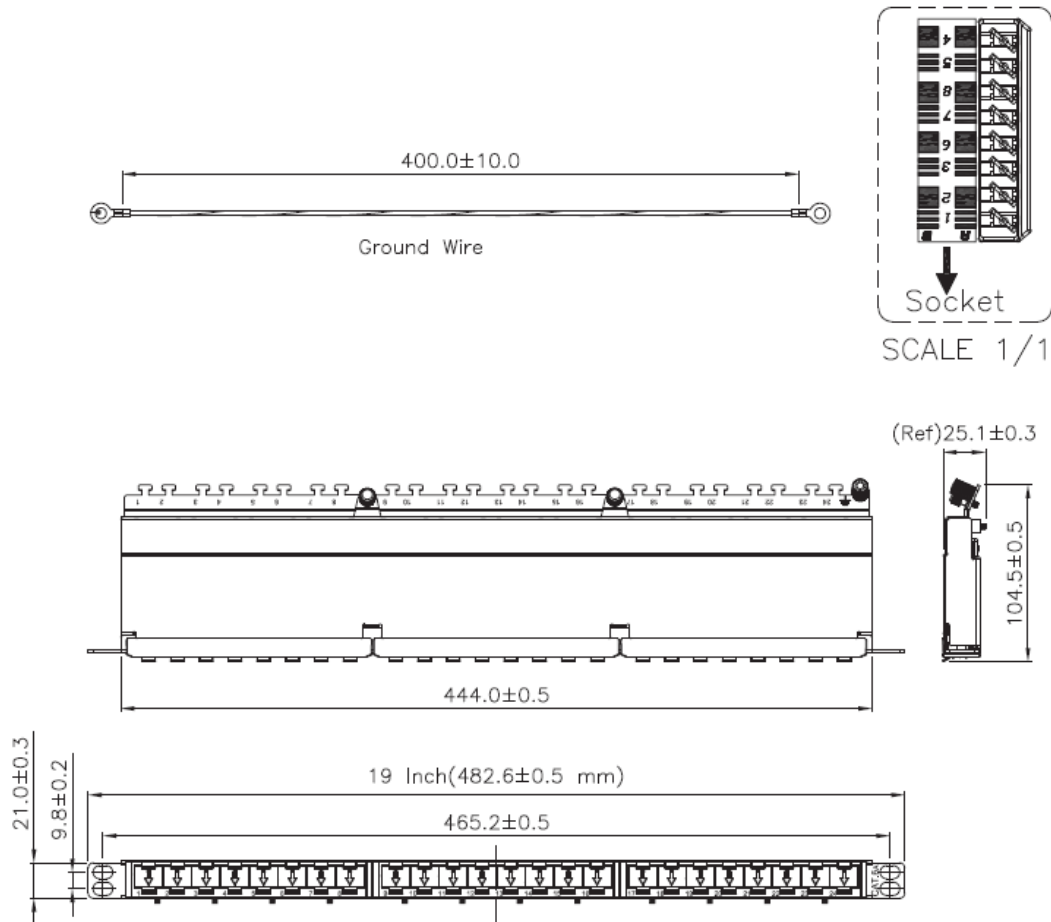
The DIGITUS<sup>®</sup> 24-port 0.5U Patch Panel offers a high density.

As the panel is only 0.5U in height, it allows to present 48 ports on 1U (2 panels with 24 ports each) which can be installed.

### Product Images



## Technical Drawings



### Product Number Information

DN-91624S-SL-EA DIGITUS® CAT 6<sub>A</sub>, Class E<sub>A</sub> High Density Patch Panel, shielded, 0.5U, 24-port, RJ45, incl. dust protection shutter, 8P8C, color black (RAL 9005)

### More High Density Patch Panel DIGITUS®

DN-91624S-SL-SH DIGITUS® CAT 6 Patch Panel, shielded, 24-port RJ45, incl. shutter, 8P8C, LSA, 0.5U, 19" rack mount, color black (RAL 9005)

DN-91624S-SL-SH-G DIGITUS® CAT 6 Patch Panel, shielded, 24-port RJ45, incl. shutter, 8P8C, LSA, 0.5U, 19" rack mount, color grey (RAL 7035)

DN-91624U-SL-SH DIGITUS® CAT 6 Patch Panel, unshielded, 24-port RJ45, incl. shutter, 8P8C, LSA, 0.5U, 19" rack mount, color black (RAL 9005)

### Product Number Information - Accessories

DN-LSA-PT DIGITUS® LSA Punch Down Tool

DN-94014 DIGITUS® Pliers, cutting area 0.7 mm hole, for precise and easy cutting, compact design, with ergonomic handle (yellow)

DN-94015 DIGITUS® Cutter & Stripper, 5" electrical cutter & stripper for flush cutting, size 20-24 AWG

DN-CT-10M-20 Velcro Tape, 20 mm wide, for structured cabling, 10 m roll, color black