

DIGITUS[®] CAT 6 Patch Panel, unshielded



DN-91624U

✓ Category 6

✓ Unshielded

✓ 16-, 24- or 48-port version

✓ Color black (RAL 9005)

Abstract

DIGITUS[®] CAT 6 Patch Panel, unshielded, color black (RAL 9005), 16-, 24- or 48-port version

Features

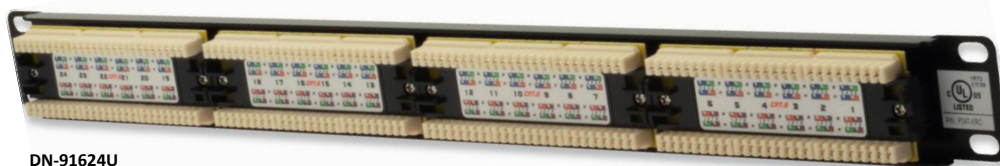
- Manufactured acc. to Link Performance Class E, for up to 250 MHz, EN 50173 and ISO/IEC 11801
- UL, 3P Permanent Link and Channel Link certified
- RJ45 jacks
- Cable installation via LSA strips, color coded acc. EIA/TIA 568 A&B
- Fixing option for cable ties, central ground connection
- Suitable for 483 mm (19") rack mount
- Material housing: SECC, 1.5 mm galvanized, cold-rolled steel acc. EN1.4301
- Available as 16-port (1U), 24-port (1U) and 48-port (2U)

Product Overview

The unshielded CAT 6 Patch Panel from DIGITUS[®] is available as 16- or 24-port (1 Height unit) or 48-port version (2 Height units).

It is manufactured acc. to Link Performance Class E, for up to 250 MHz, EN 50173 and ISO/IEC 11801 and also UL, 3P Permanent Link and Channel Link certified. The housing is made of 1.5 mm galvanized cold-rolled steel is therefore perfectly suitable for 19" rack mounting.

Product Images



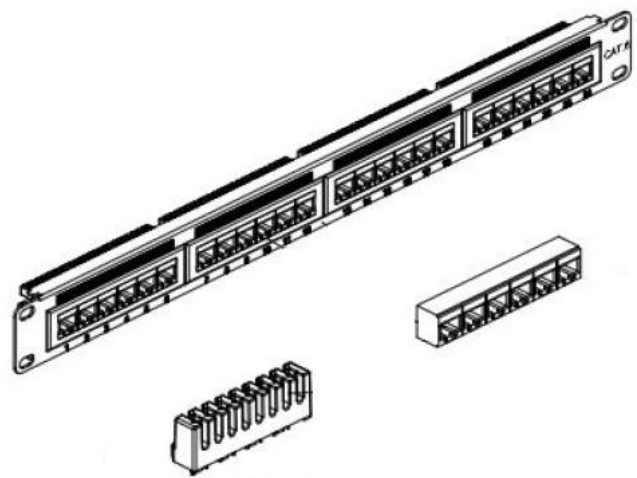
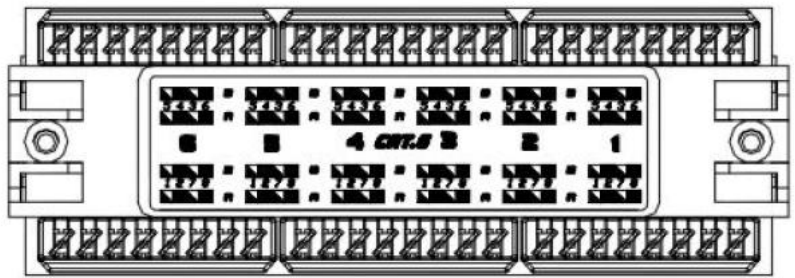
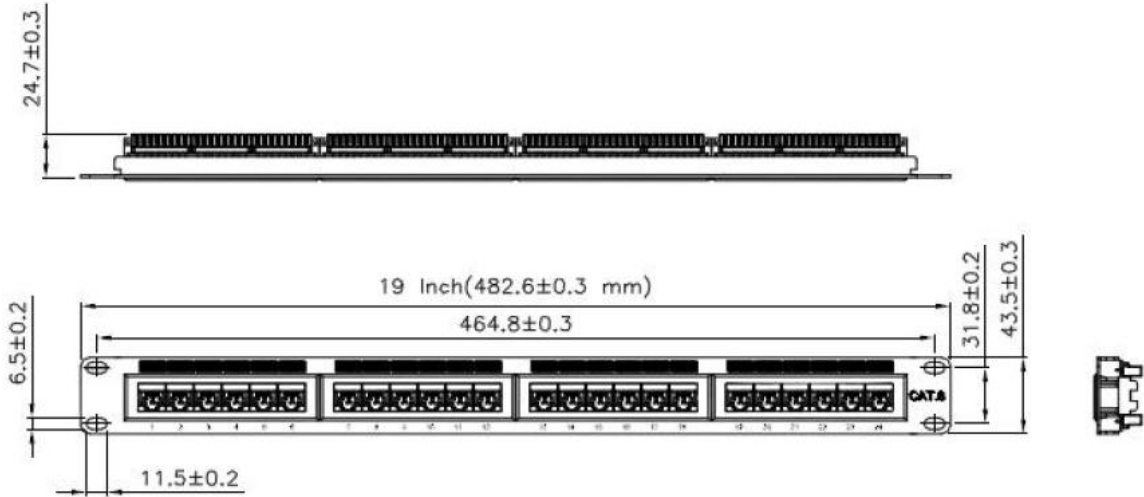
DN-91624U



DN-91648U

Technical Drawings

DN-91624U



Product Number Information

- DN-91616U DIGITUS[®] CAT 6, Class E Patch Panel, unshielded, 16-port RJ45, 8P8C, LSA, 1U, rack mount, color black (RAL 9005)
- DN-91624U DIGITUS[®] CAT 6, Class E Patch Panel, unshielded, 24-port RJ45, 8P8C, LSA, 1U, rack mount, color black (RAL 9005)
- DN-91648U DIGITUS[®] CAT 6, Class E Patch Panel, unshielded, 48-port RJ45, 8P8C, LSA, 2U, rack mount, color black (RAL 9005)

Product Number Information - Accessories

- DN-LSA-PT DIGITUS[®] LSA Punch Down Tool
- DN-94014 DIGITUS[®] Pliers, cutting area 0.7 mm hole, for precise and easy cutting, compact design, with ergonomic handle (yellow)
- DN-94015 DIGITUS[®] Cutter & Stripper, 5" electrical cutter & stripper for flush cutting, size 20-24 AWG
- DN-CT-10M-20 Velcro Tape, 20 mm wide, for structured cabling, 10 m roll, color black