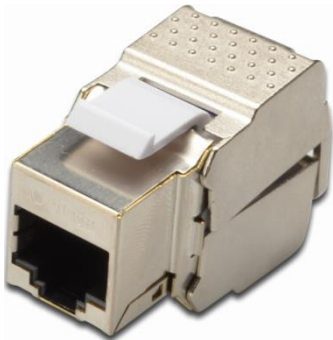


DIGITUS® CAT 6, Class E Keystone Module, shielded



✓ Category: 6, Class E

✓ Shielded

✓ 500 MHz

✓ RJ45 jack

Abstract

DIGITUS® CAT 6 Class E Keystone Module, shielded, toolfree installation

Features

- CAT 6 Class E for up to 250 MHz
- Fully shielded
- Suitable for 10 Gbit Ethernet
- Quick and easy installation without any special tool
- Tool free connection via LSA, color coded according EIA/TIA 568 A&B
- RJ45 outlet for mounting in Patch Panel
- Opening dimensions according to Keystone standard 19.35x14.8 mm
- Compact design allows the installations of 24 pieces in a row of 483 mm (19") 1U Panels
- Cable entry: Rear side
- Housing: Nickel-plated, impact-resistant zinc housing
- Contacts: Phosphor, bronze
- IDC contacts: Phosphor, bronze
- Layer: 50 µm gold over 40 µm nickel
- Cable connection type: Tool free with cable hatch for strong/flexible conductions AWG 23-26
- Wiring standard: EIA/TIA 568 A/B
- Conformity: Category 6 / 10GBase-T Channel, ANSI/EIA/TIA 568C.2.1:2002, ISO/IEC 11801:2002
- Certification: GHMT, Delta
- Dimensions: 18x24x41 mm
- Weight: ca. 23 g

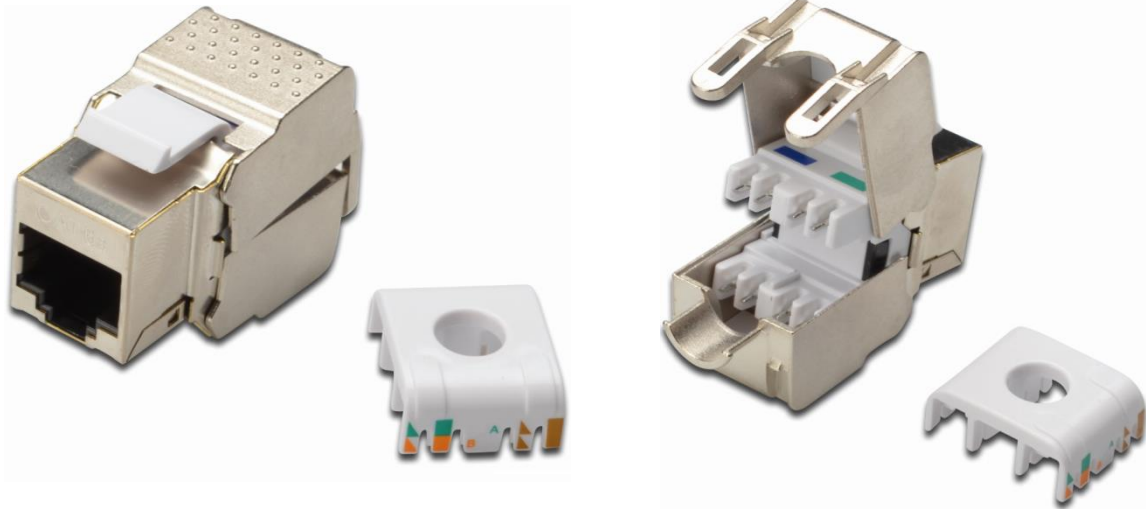
Product Overview

The fully downward compatible CAT 6 Keystone Module makes an easy installation in combination with excellent measurements possible. The high quality ensures the usage with the most demanding applications like 10Gbase-T. The innovative housing design offers quick and safe wire terminations without any special tool. Its compact form allows an installation of 24 Keystone Modules in a row with a 1U Patch Panel. These facts assure an uncomplicated mounting and marking as well as a high reliability.

Product Number Information

DN-93612 DIGITUS® CAT 6 Keystone Module, shielded, Class E, RJ45 to LSA, toolfree installation

Product Images



Technical Drawings

