

## OM2 50/125 LC - SC DUPLEX FIBRE OPTIC PATCH CORDS

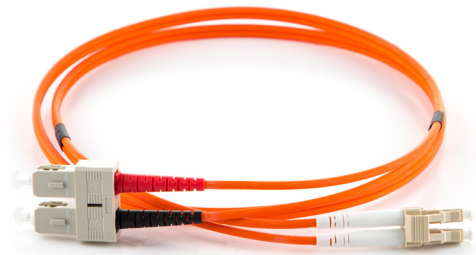
OM2 multimode patch cords are used in 1Gb/s networks common in LAN applications and 10Gb/s applications over shorter distances. All assemblies are fully tested prior to delivery and supplied with test results. Most common connector types, configurations and lengths are available from stock, using 3mm (for additional ruggedising) or 2mm diameter cable on request. OM2 multimode patch cords are supplied with an orange LSZH cable jacket as standard. Non-stocked configurations (length, colour, connectors and cable type) can be manufactured to meet specific requirements

### APPLICATIONS

- LAN/Enterprise and legacy networks
- For use in 10 Gb/s networks <150m indicative link length at 850nm (SR) wavelength
- For use in 1 Gb/s networks >750M indicative link length at 850nm (SX) wavelength

### FEATURES

- SC, LC, and ST connectors as standard, other connectors available
- LSZH - Low smoke zero halogen, orange jacket
- 900µm tight buffer, 3mm simplex and duplex cable (2mm cable on request)
- Available in other colours
- Armoured, round duplex and flat twin patch cords also available
- OM2 fibre conforms to or exceeds all relevant ISO/IEC, TIA/EIA and ITU standards
- All patch cords come with a UPC polished connector end face as standard



### FIBRE SPECIFICATION

Attenuation (db/km)	≤ 2.4 @ 850nm / ≤ 0.6 @ 1300nm
Overfilled Modal Bandwidth (MHz x km)	≥ 700 @ 850nm / ≥ 500 @ 1300nm
Effective Modal Bandwidth (MHz x km)	≥ 950 @ 850nm
Application Support Distance on: 40 and 100 Gigabit Ethernet -SR (m)	N/A
10 GBase - SR (m)	150 @ 850nm
1000 Base - SX (m)	750 @ 850nm

### CABLE SPECIFICATION

	SIMPLEX	DUPLEX
Cable Material	LSZH	LSZH
Strength Member	Aramid	Aramid
Crush (N/100mm)	1000	1000
Tensile (N)	120	120
Operating Temperature (°C)	-20 to 60	-20 to 60

### CONNECTOR SPECIFICATION

IL Max/Master (db) (Acceptance)	≤ 0.25
Av./Random (db)	≤ 0.20