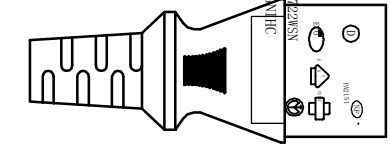
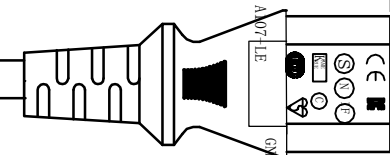
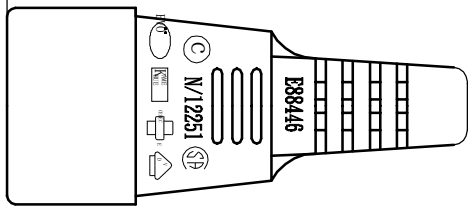


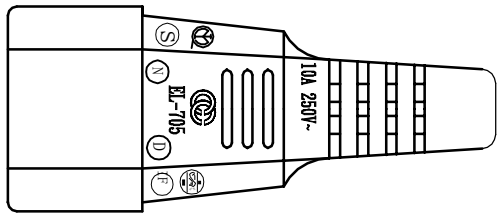
Length ± 50MM

P1

P2

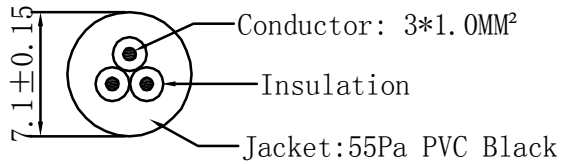
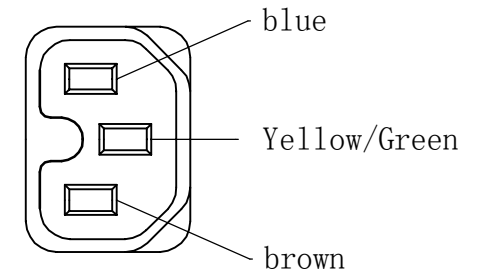


CC <VDE> <OVE> KEMA-KEUR + 3 0 FT D N S  
 IEMMEQU CEBEC H05VV-F 3G0.75mm<sup>2</sup> N/14475 CHING CHENG CE



PIN ASSIGNMENT:

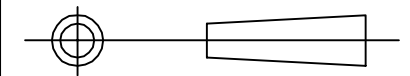
P1	P2
L	L brown
N	N blue
E	E (Yellow / Green)



8		
7		
6		
5		
4		Outer Jacket: 45Pa PVC BLACK
3		10A C15 IEC Socket "Hot Condition"
2		10A C14 Plug
1		H05VV-F 3*1.0MM <sup>2</sup> OD:7.1MM BLACK
NO.	Material	Description

2210-xxH

Title: 10A C14 PLUG TO 10A C15 Socket  
 "Hot Condition" Power CAble



Customer: FDL	Page:1/1	Drawn BY:CLR
Customer P/N: 2210-xxH	REV:A	Check BY:DYH
Date: 2016.07.15	Drawing NO.: FPAC63	Unit:mm
		Appd BY: