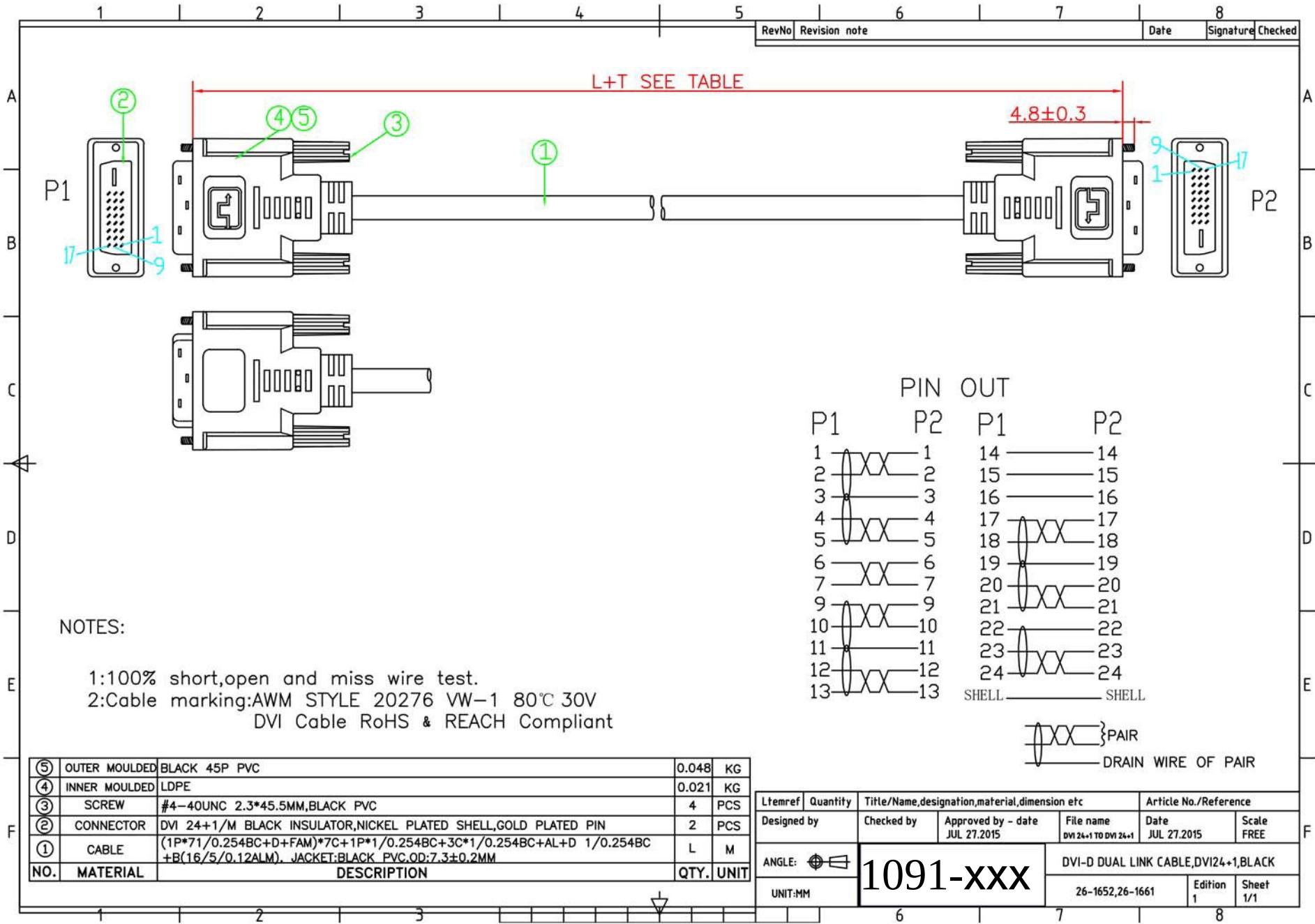


RevNo	Revision note	Date	Signature	Checked
-------	---------------	------	-----------	---------



NOTES:

- 1:100% short,open and miss wire test.
- 2:Cable marking:AWM STYLE 20276 VW-1 80°C 30V
DVI Cable RoHS & REACH Compliant

PIN OUT

P1	P2	P1	P2
1	1	14	14
2	2	15	15
3	3	16	16
4	4	17	17
5	5	18	18
6	6	19	19
7	7	20	20
9	9	21	21
10	10	22	22
11	11	23	23
12	12	24	24
13	13	SHELL	SHELL

PAIR
 DRAIN WIRE OF PAIR

⑤	OUTER MOULDED	BLACK 45P PVC	0.048	KG
④	INNER MOULDED	LDPE	0.021	KG
③	SCREW	#4-40UNC 2.3*45.5MM,BLACK PVC	4	PCS
②	CONNECTOR	DVI 24+1/M BLACK INSULATOR,NICKEL PLATED SHELL,GOLD PLATED PIN	2	PCS
①	CABLE	(1P*71/0.254BC+D+FAM)*7C+1P*1/0.254BC+3C*1/0.254BC+AL+D 1/0.254BC+B(16/5/0.12ALM). JACKET:BLACK PVC.QD:7.3±0.2MM	L	M
NO.	MATERIAL	DESCRIPTION	QTY.	UNIT

Ltemref	Quantity	Title/Name,designation,material,dimension etc			Article No./Reference	
Designed by	Checked by	Approved by - date JUL 27.2015	File name DVI 24+1 TO DVI 24+1	Date JUL 27.2015	Scale FREE	
ANGLE:	1091-XXX		DVI-D DUAL LINK CABLE,DVI24+1,BLACK			
UNIT:MM			26-1652,26-1661	Edition 1	Sheet 1/1	