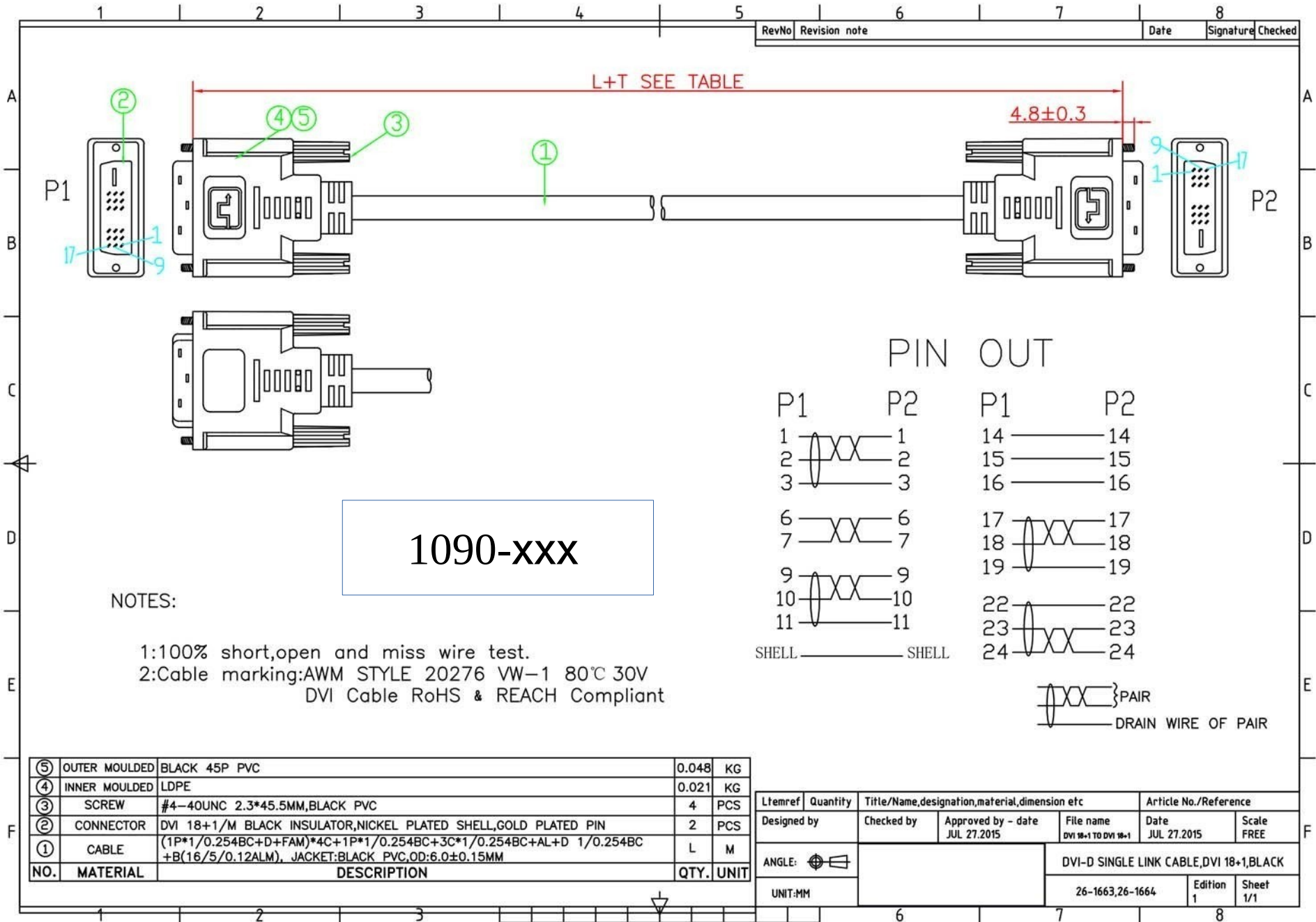
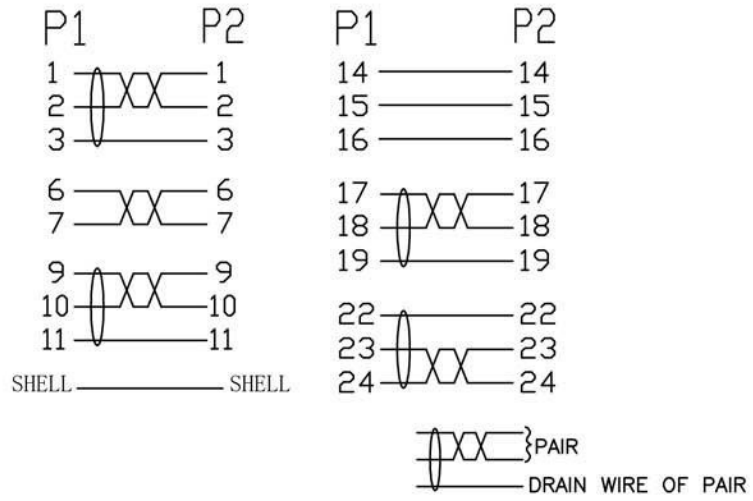


RevNo	Revision note	Date	Signature	Checked
-------	---------------	------	-----------	---------



1090-xxx

PIN OUT



NOTES:
 1:100% short,open and miss wire test.
 2:Cable marking:AWM STYLE 20276 VW-1 80°C 30V
 DVI Cable RoHS & REACH Compliant

⑤	OUTER MOULDED	BLACK 45P PVC	0.048	KG
④	INNER MOULDED	LDPE	0.021	KG
③	SCREW	#4-40UNC 2.3*45.5MM,BLACK PVC	4	PCS
②	CONNECTOR	DVI 18+1/M BLACK INSULATOR,NICKEL PLATED SHELL,GOLD PLATED PIN	2	PCS
①	CABLE	(1P*1/0.254BC+D+FAM)*4C+1P*1/0.254BC+3C*1/0.254BC+AL+D 1/0.254BC +B(16/5/0.12ALM), JACKET:BLACK PVC,OD:6.0±0.15MM	L	M
NO.	MATERIAL	DESCRIPTION	QTY.	UNIT

Ltemref	Quantity	Title/Name,designation,material,dimension etc			Article No./Reference	
Designed by	Checked by	Approved by - date	File name	Date	Scale	
		JUL 27.2015	DVI 18-1 TO DVI 18-1	JUL 27.2015	FREE	
ANGLE:				DVI-D SINGLE LINK CABLE,DVI 18+1,BLACK		
UNIT:MM				26-1663,26-1664	Edition 1	Sheet 1/1